



HB 8881
HB 8881V

HEBU Vacuum Cleaner

Contents

1	Scope of delivery	21
2	Safety instructions.....	21
3	Scope	22
3.1	Inteded use	22
3.2	Contraindications	22
4	Operation	22
4.1	Manual mode	22
4.2	Automatic mode	23
5	Cleaning and maintenance	24
5.1	Changing the filter	24
5.2	Exchanging the exhaust filter.....	25
5.3	Exchanging the motor protection filter	25
5.4	Troubleshooting	26
6	Accessories/Spare parts	26
7	Vacuum cleaner spares	27
7.1	Housing spares	27
7.2	Suction turbine spares	29
7.3	Container spares	30
8	Warranty	31
9	Environmental protection	31
10	Specifications.....	31
11	Manufacturer and after-sales service address	31
12	Annex	32



HEBU
Vacuum Cleaner

1 Scope of delivery

HB 8881	HEBU Vacuum Cleaner
HB 8887-03	ECO nonwoven filter
HB 8886-04	Nonwoven filter bag (1 pc.)
	Operating manual

*On request, we can alter this standard configuration.
Please note the wording on your invoice.
For more information, see the chapter Accessories*

2 Safety instructions

Our products are exclusively intended for professional use by appropriately trained and qualified personnel and may only be acquired by them.

All safety instructions contained in this operating manual are marked with **!**.



Read the operating manual and the locally applicable occupational safety regulations and ensure that these are observed before using the vacuum cleaner for the first time.
Please ensure that this operating manual is kept in a safe place for later use and enclose it when selling or otherwise passing on the vacuum cleaner to a third party.



Intended purpose: This device is intended to be used for the extraction of fine, dry grinding dust.



When vacuuming, the filter may never be removed.



Do not rivet or screw any signs or symbols onto the device. This can render the protective insulation ineffective. We recommend using adhesive signs.



Only ever use undamaged plugs and cables. Check the plug and cable at regular intervals.



The mains voltage and voltage specification given on the device must be in agreement.



Only use original HEBU accessories.



Wear personal protective gear, goggles, ear protectors and gloves



The device may not be operated in potentially explosive atmospheres



Any serious incident that has occurred in relation to the device should be reported to the manufacturer and the competent authority of the Member State in which the user and/or patient is established.

3 Scope

Dust extraction equipment is used in orthopaedics to remove gypsum dust.

3.1 Inteded use

dust extractor; Accessories: An assortment of devices used to extract the dust produced by a plaster saw during gypsum removal (e.g., pneumatic or electric gypsum saw) from the working field. It usually consists of a motorized vacuum pump, a filter and a collection container (e.g., bag or cartridge). It is usually a mobile unit and its motor can run simultaneously with the saw motor.

3.2 Contraindications

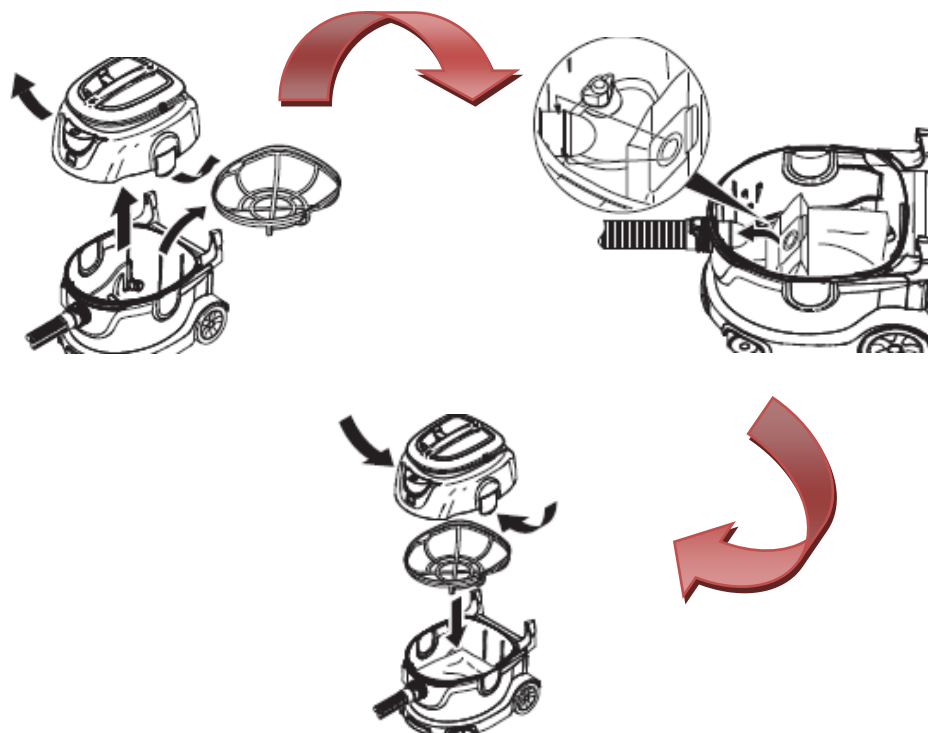
There are no known contraindications.

4 Operation

4.1 Manual mode

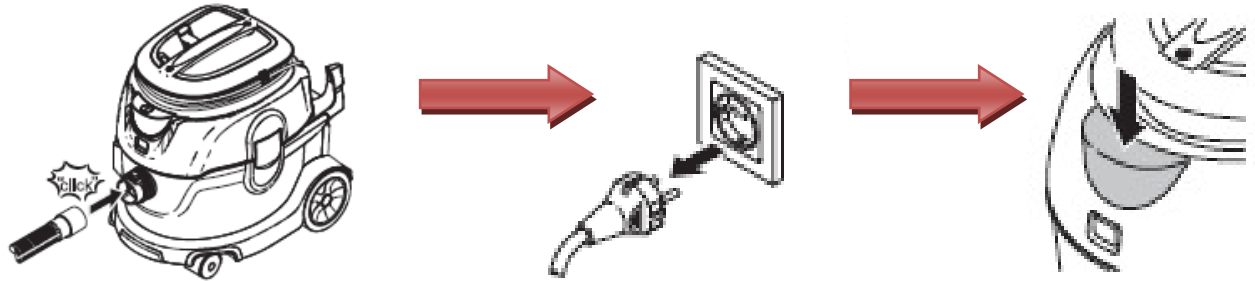
Mounting the filter bag:

- Disengage the suction head and remove.
- Insert the filter
- Replace the suction head and lock into position

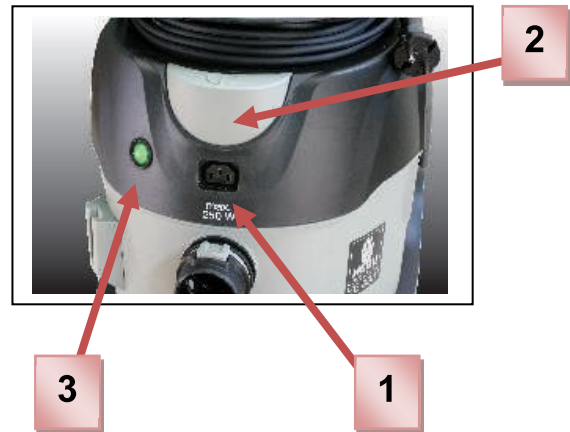


Commissioning:

- Adapt the suction hose
- Connect the mains plug.
- Switch on the device and start up

**4.2 Automatic mode**

- Insert the mains plug of the HEBU oscillating saw at the vacuum cleaner (1).
- Switch on the vacuum cleaner (2).
- The lamp lights up and the vacuum cleaner runs for around 0.5 seconds as a function check. The vacuum cleaner then goes to the standby mode (3)

**Note:**

- ◆ The vacuum cleaners can be used together with a oscillating HEBU cast saw as well as the autopsy model.
- ◆ The vacuum cleaner is automatically switched on and off in the standby mode by the HEBU oscillating saw, provided you have performed the following points beforehand:
 - Every time the vacuum cleaner is first switched on, it goes to the standby mode.
 - or after being switched on again at least 6 secs. after last being switched off.
- ◆ The vacuum cleaner has a run-on time of up to 6 secs. This is intended to ensure that the vacuum cleaner hose is completely emptied.
- ◆ If the vacuum cleaner is switched on again less than 4 seconds after being switched off, the suction process operates without automatic function. However the HEBU oscillating saw can still be switched on and off.
- ◆ The voltage specification of the vacuum cleaner must agree with the voltage specification of the HEBU oscillating saw.

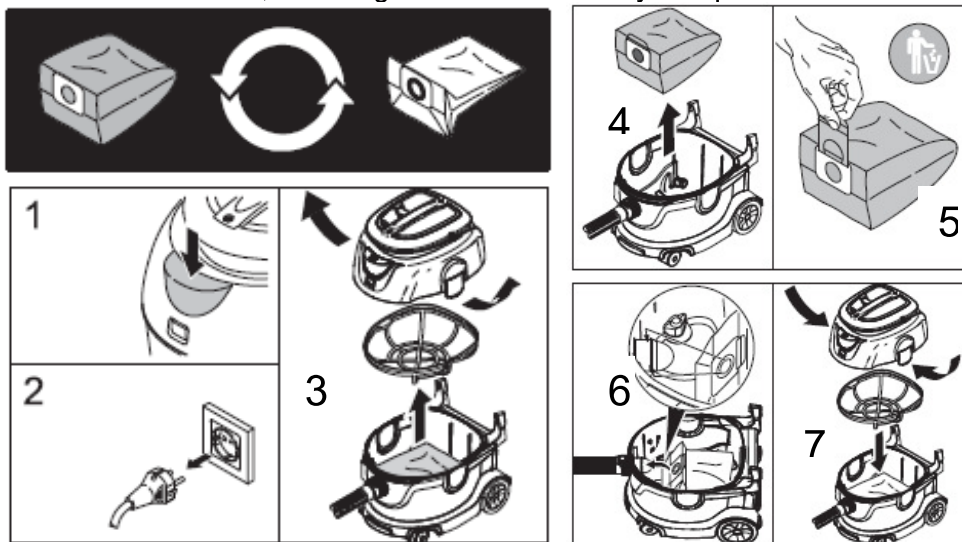
5 Cleaning and maintenance

!	Before performing any cleaning or maintenance work, disconnect the mains plug.
!	Repairs may only be performed by approved customer service centres or by specialist personnel who are familiar with all relevant safety regulations.
!	Ensure that all safety checks stipulated by the relevant locally applicable regulations for mobile commercially used devices are observed.

- Exchange the motor protection filter every three months (otherwise suction loss or damage to the suction turbine can occur).
- Exchange the exhaust filter once a year.
- As cleaning agent we recommend products with a pH value between 9 and 10, e.g. MediClean forte by Dr. Weigert.

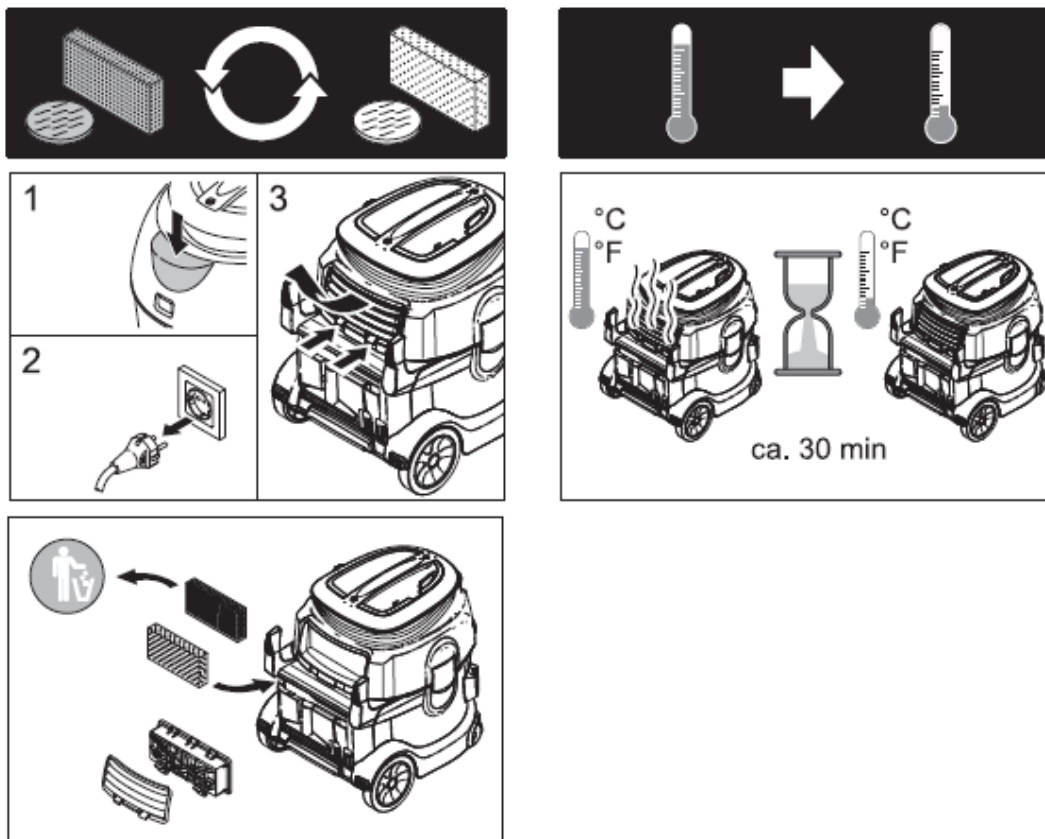
5.1 Changing the filter

- Open the filter cover
- Exchange the filter
- Close the filter cover, ensuring that it clicks audibly into place



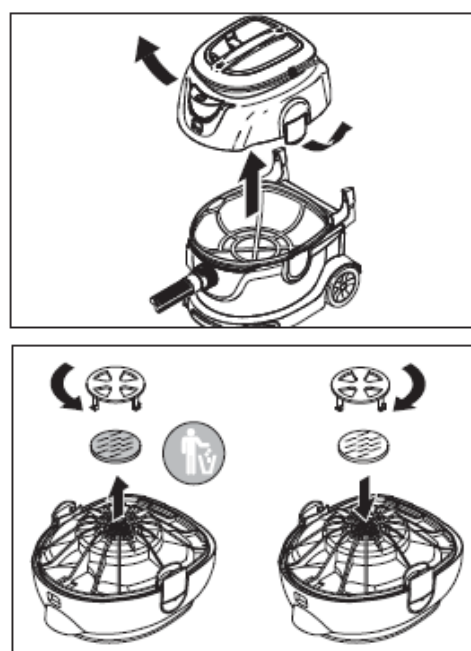
5.2 Exchanging the exhaust filter

- Leave the vacuum cleaner to cool down for around 30 minutes (if it has just been in use)
- Open the filter cover
- Exchange the exhaust filter
- Close the filter cover, ensuring that it clicks audibly into place



5.3 Exchanging the motor protection filter

- Leave the vacuum cleaner to cool down for around 30 minutes (if it has just been in use)
- Open the filter cover
- Remove the filter holder
- Exchange the motor protection filter
- Replace the filter holder
- Close the filter cover, ensuring that it clicks audibly into place.



5.4 Troubleshooting

Suction turbine is not running

- Check the cable, plug, fuse and socket.
- Switch on the device

The suction turbine switches off

- Empty the container

The suction turbine does not start up again after emptying the container

- Switch off the device and wait for 5 seconds, then switch back on

Device loses suction

- Remove blockage from dust removal unit, suction hose or filter
- Exchange paper filter bag/nonwoven filter
- Lock filter cover correctly into place
- Exchange motor protection filter.
- Exchange exhaust filter

Dust emerges while vacuuming

- Check correct mounting position of the filter
- Exchange the motor protection filter
- Exchange the exhaust filter

6 Accessories/Spare parts

HB 8887-03	ECO nonwoven filter
HB 8887-04	ECO nonwoven filter HEPA
HB 8882-02	Flexible 2 m suction hose
HB 8886-03	Paper filter bags (5 pcs.)
HB 8886-04	Non-woven filter bags (5 pcs.)
HB 8887-05	Filter basket
HB 8887-06	Motor protection filter

7 Vacuum cleaner spares

7.1 Housing spares

(drawing numbers refer to Fig. 1)

Pos.	Batch	Description	HEBU-Nr.	
			HB 8881	HB 8881V
1	1	Complete hood for replacement only	E 8881-01	
2	1	Parallel pin 5m6x50 -St ISO 2338	E 8881-02	
3	1	Cable hook (grey)	E 8881-03	
4	1	Mains connecting cable 8m *EU / 8m *US	E 8881-04	E 8881-04V
5	1	button complete (grey)	E 8881-05	
6	3	Screw 5x40 -A2-70 (IN6Rd)	E 8881-06	
7	1	Complete air guide for replacement only	E 8881-07	
8	1	Filter for replacement only (162x64x20mm)	HB 8887-03	
9	1	Air discharge grille (black)	E 8881-08	
10	1	Filter HEPA	HB 8887-04	
11	1	Grip	E 8881-09	
12	1	Fastening adapter	E 8881-10	
13	4	Screw 5x30 -10.9-R2R (K-In6Rd)	E 8881-11	
14	1	Fastening plug	E 8881-12	
15	1	Screw 5x60 -10.9-R2R (K-In6Rd)	E 8881-13	
16	2	Screw 4x25 -10.9-R2R (K-In6Rd)	E 8881-14	
17	1	Filter housing (version 2)	E 8881-15	
18	1	Ring	E 8881-16	
19	1	Status LED (green)	E 8881-17	
20	1	Control board 230V / 110V	E 8881-18	E 8881-18V
21	1	Fuse T10.0AL 250V / 16.0A	E 8881-19	E 8881-19V
22	1	Fuse holder	E 8881-41	

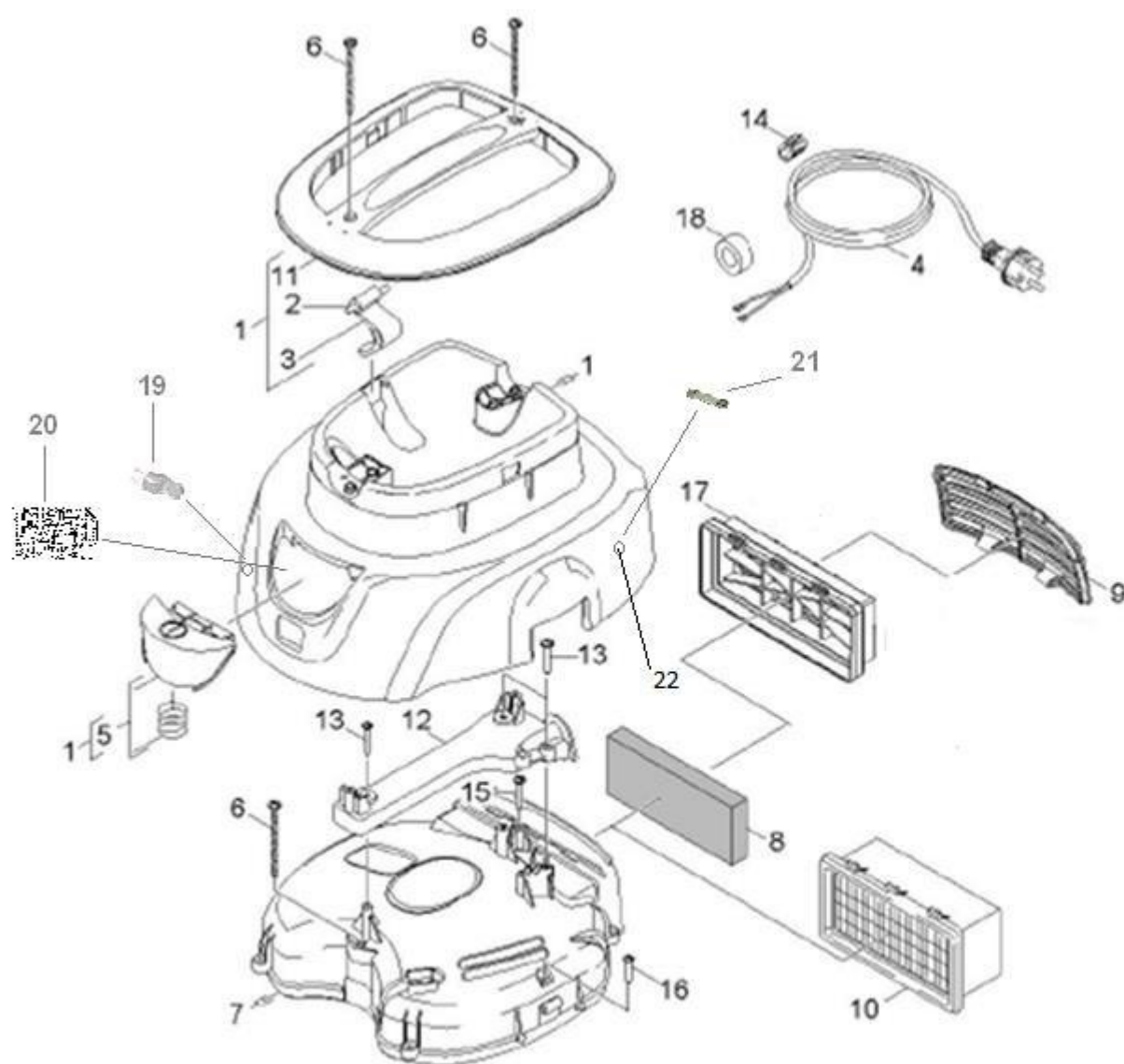


Fig. 1:
Explosion drawing of the housing

7.2 Suction turbine spares

(drawing numbers refer to Fig 2)

Pos.	Batch	Description	HEBU-Nr.	
			HB 8881	HB 8881V
1	1	Complete housing	E 8881-20	
2	1	Complete suction turbine 230V / 110V	E 8881-21	E 8881-21V
3	1	Set of carbon brushes	E 8881-22	
4	1	Bottom motor bearing T12/1	E 8881-23	
5	1	Complete housing for replacement only	E 8881-24	
6	2	Closure flap	E 8881-25	
7	1	ON/OFF switch	E 8881-26	
8	1	E small components T15/1 *CN	E 8881-27	
9	1	Socket	E 8881-28	
10	1	Sealing cord, cellular rubber D6	E 8881-29	
11	1	Motor protection filter	HB 8887-06	
12	1	Filter basket	HB 8887-05	
13	1	Motor protection filter grille.	E 8881-30	

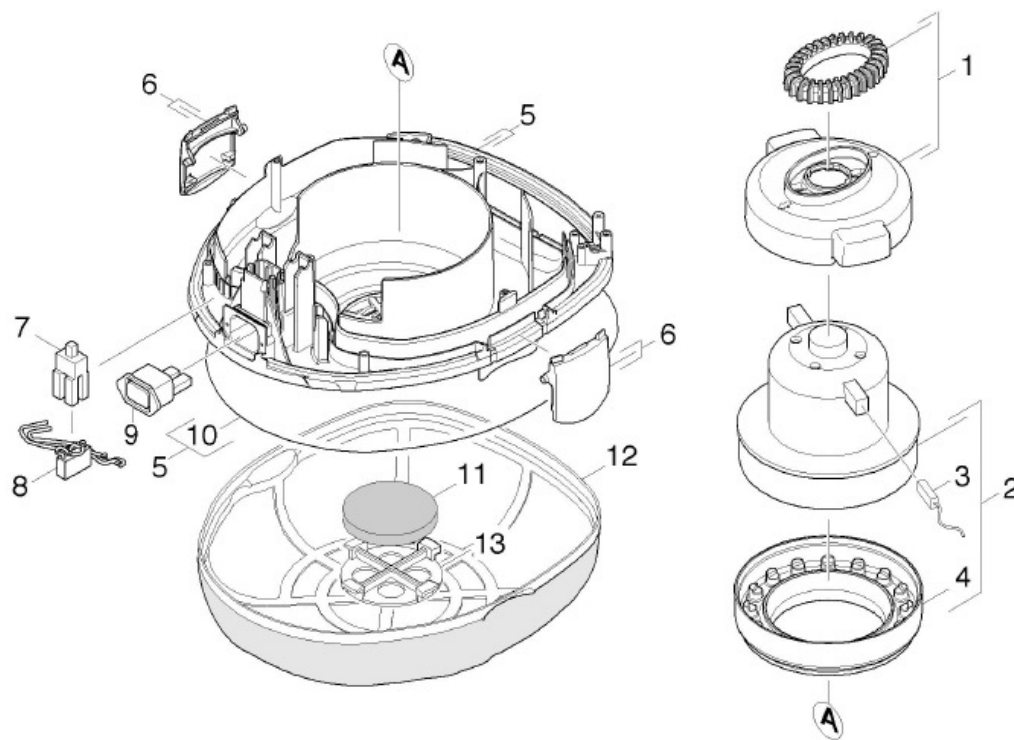


Fig. 2:
Explosion drawing of the suction turbine

7.3 Container spares

(drawing numbers refer to Fig 3)

Pos.	Batch	Description	HEBU-Nr.	
			HB 8881	HB 8881V
1	1	Complete container	E 8881-31	
2	1	Circlip	E 8881-32	
3	1	Suction port T	E 8881-33	
4	1	Complete chassis for replacement only	E 8881-34	
5	2	Steering caster	E 8881-35	
6	2	Complete wheel (grey)	E 8881-36	
7	10	Screw 5x30 -10.9-R2R (K-In6Rd)	E 8881-37	
8	1	Hanging kit	E 8881-38	
10	1	Floor nozzle holder	E 8881-39	
11	5	Screw 4x16 -10.9-R2R (K-In6Rd)	E 8881-40	

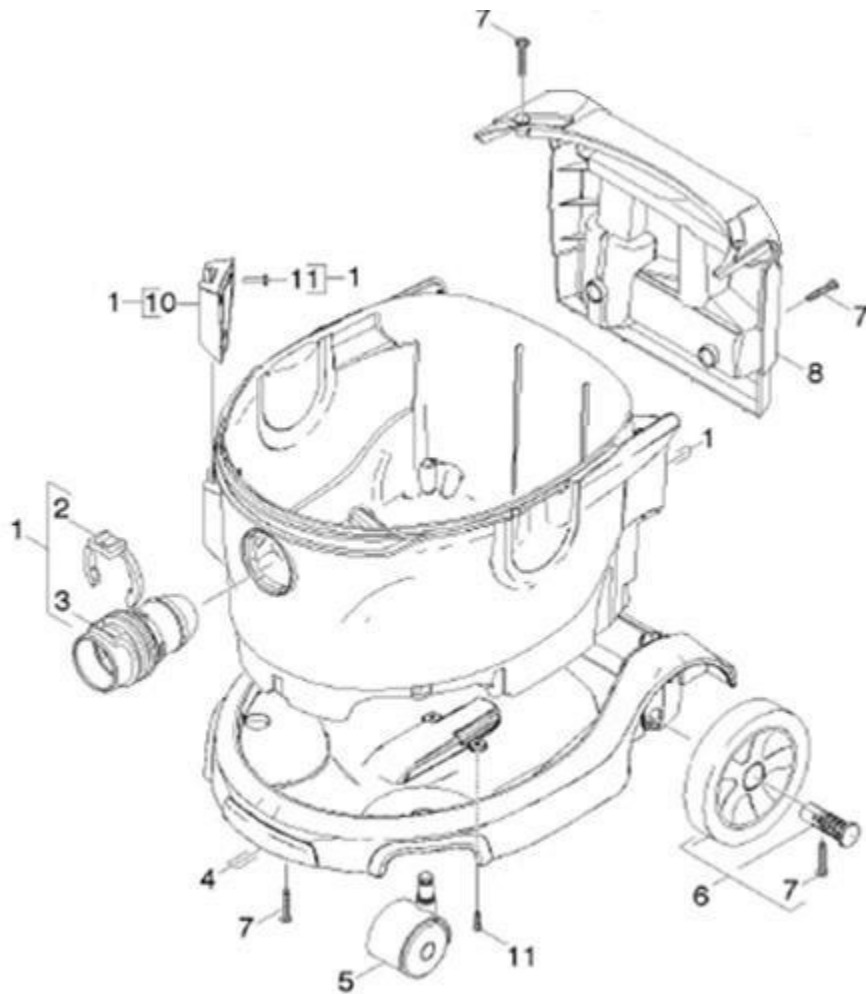


Fig. 3:
Explosion drawing of the container

8 Warranty

We offer a warranty on the HEBU vacuum cleaner in compliance with statutory and country-specific regulations (presentation of invoice or delivery note required). The warranty period is at least 18 months. In the event of material or production defects, we provide repair of the device free of charge. Any attempts by users to carry out their own repairs will void any warranty claims. Damage caused as a result of incorrect treatment, overload or normal wear and tear are not covered by the warranty. Please contact our after sales service department. In the event of a warranty claim or repair, please enclose a copy of the invoice or delivery note with the device

9 Environmental protection

Ensure that packaging, end of life devices and accessories are sent for environmentally friendly recycling. Electrical appliances must not be disposed of with normal household waste, but sent to the responsible local disposal and recycling centre. Ask your specialist dealer for more detailed information.



10 Specifications

Model	HB 8881	HB 8881 (V)
Mains connection	220-240 Volt, 50/60 Hz.	110-120 Volt, 50/60 Hz.
Rated consumption	1300 Watt	1300 Watt
Vacuum	244 mbar	24,4 KPa
Container capacity	appr. 15 l	appr. 15 l
Weight	8,0 kg	8,0 kg
Air quantity	61 L	61 L
Filter performance	99,97 % > 0,5 µm	99,97 % > 0,5 µm
Safety class	II	II
Protection rating (IP)	IP2X	
Noise level (A-rated)	59 dB (A)	
Standards	ISO 9001:2000 et ISO 13485:2003	

11 Manufacturer and after-sales service address

HEBUmedical GmbH

Badstraße 8
78532 Tuttlingen
Germany

Tel: +49 74 61 / 94 71 - 0

Fax: +49 74 61 / 94 71 - 22

eMail: service@HEBUmedical.de

eb: www.HEBUmedical.de

12 Annex

Complete set including saw and accessories

HB 8888-01

With saw HB 8884, vacuum cleaner + hose + hose holder + dust removal unit + saw blade 8896-03 + tools (but without HB 8883-03 and HB 8883-05)

Only optional
accessories



Only optional
accessories

HB 8888-02

With saw HB 8880, vacuum cleaner + hose + hose holder + dust removal unit + saw blade 8896-02 + tools (but without HB 8883-04 and HB 8883-05)

Only optional
accessories



Only optional
accessories

Accessories (optional)

HB 8883-03	Hanging kit with handle, height adjustable
HB 8883-04	(HB 8883-03 for all saws except ECO II and HB 8883-04 for ECO II)



HB 8883-05	Magnetic shelf for saw blades and tools
-------------------	---



